

## QuickStart: Wahl Heat Spy a30, z30, a50, z50



### 1. MEMORY:

- Insert the SD memory card in the slot under the gray rubber cover located on the left side of the camera (image, right).

### 2. POWER:

- Check that the battery is installed and fully charged. Battery compartment is located at the bottom of the camera handle. To access the battery compartment, unscrew the cover. For long-term storage, it is recommended that you either turn the battery upside down or remove it from the unit due to current draw.

### 3. START-UP:

- Remove the Lens Cap and press and hold down the red POWER button for one second. You should hear a click as the camera turns on. The start-up screen should appear within a few seconds as the camera boots up. Total start-up time is about 60 seconds. During this time you'll hear the camera clicking occasionally as the detector array inside the imager stabilizes.

### 4. FOCUS:

- The Wahl Heat Spy has a Manual Focus. Turn the Focus Ring on the front of the camera to adjust. Turn to the right to adjust near focus and turn left to adjust far focus.

### 5. RANGE:

- The Wahl Heat Spy has two thermal ranges that you can use depending on your application. Range 1, -4°F to 356°F (-20°C to 180°C), is sufficient for most applications. If, however, you require the ability to image objects that are warmer than 356°F (180°C), Range 2 covers 212°F to 1112°F (100°C to 600°C).
- To change RANGE, press the MENU/CONFIRM button and navigate to SETUP using the Arrow Keys and select MEASUREMENT from the sub-menu by pressing the MENU/CONFIRM button once again. Highlight the TEMP/RANGE option and select the RANGE you want by pressing either the Left or Right Arrow Keys. Press the MENU/CONFIRM button once more to set the RANGE you have selected.

### 6. AUTO ADJUST (Level & Span):

- The Heat Spy will start-up in Auto Mode where the Level and Span are automatically adjusted depending on what is detected thermally within the field of view.

## QuickStart: Wahl Heat Spy a30, z30, a50, z50

### 7. MANUAL ADJUST (Level & Span):

- To switch to Manual Mode, press the MENU/CONFIRM button to open the main menu. Using the Arrow Keys, scroll to LEVEL/SPAN and select L/S from the sub-menu. This should highlight, in yellow, the high and low temperature values on the scale.
- From here, you can increase and decrease the Span by pressing the Left (decreases Span) and Right (increases Span) arrows.
- To adjust Level, use the Up (raises Level) or Down (lowers Level) arrows.
- Please Note:** The yellow highlight will timeout after about 3-4 seconds.
- Another way to manually adjust the image is by pressing the SELECT/AUTO ("A") button from a live image. Push it until the Span values are highlighted. Once selected, use arrow buttons to adjust your span and level.
- To return to Auto Mode, go back into the Menu and under LEVEL/SPAN, select AUTO from the sub menu.



### 8. FREEZE IMAGE:

- The Trigger Button can be configured within the System Setup menu to freeze the image. From the Main Menu, navigate to SETUP and select SYS. SETUP from the sub-menu. There you will see a field for Trigger options. Choices are Save Key (to freeze image), Laser, IR/CCD (to switch between IR and visual), Spot Temp and Area Temp. You can also freeze the image by pressing the "S" (FREEZE/SAVE) button once.

### 9. SAVE IMAGE:

- Once the image is frozen, you will be given the choice to either SAVE or CANCEL. Using the Left/Right Arrow buttons highlight (blue color) which option you want. Highlight SAVE and press the MENU/CONFIRM button to store an image or highlight CANCEL and press the MENU/CONFIRM button to return to live imaging mode without saving the image. You can also save the image by pressing the "S" (FREEZE/SAVE) button once to freeze the image and then highlight SAVE and press the MENU/CONFIRM button to store it.

### 10. RECALL IMAGE:

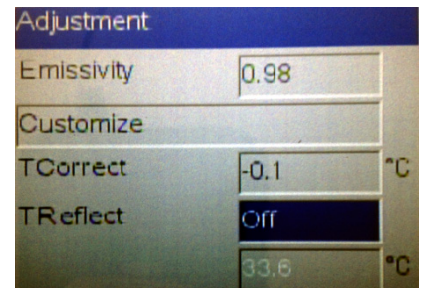
- To recall an image, press the MENU/CONFIRM button and navigate to FILE on the main menu. Highlight OPEN from the sub-menu and then press MENU/CONFIRM.
- Use the Left and Right Arrow Keys to scroll through your saved images.
- Press the CLEAR/CANCEL ("C") button to return to live imaging mode.

### 11. PALETTE:

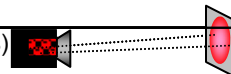
- From a live image, press the SELECT/AUTO ("A") button until the color palette is highlighted on the screen. Once selected, it will stay active for about 3-4 seconds. During this time you can use the Left and Right Arrow Keys to scroll through a number of color palette choices.

### 12. EMISSIVITY/BACKGROUND:

- Press the MENU/CONFIRM button and navigate to SETUP and select ADJUSTMENT from the sub-menu by pressing MENU/CONFIRM once again. From the ADJUSTMENT sub-menu (image, right) highlight the EMISSIVITY field and use the Left and Right Arrow Keys to change the emissivity value of the imager.
- To set the reflected temperature value, adjust the TReflect field on this same sub-menu.
- Please Note**, you may first need to turn "ON" the TReflect setting by pressing either the Left or Right Arrow Key with the TReflect field highlighted. Once ON, use the field below to set the appropriate reflected temperature value.



IFOV = 1.9 mRad (Theoretical with 160x120 Detector and standard 17.5°x13° lens)



Detect 1in. target @ 43ft.