

## QuickStart: Mikron MikroShot, NEC Thermo Shot F30 Series



1. **MEMORY:** A Open the *Battery/Memory Bay* on the bottom of the camera and insert a SD memory card (memory card must be present to save an image)
2. **POWER:** A Insert three AA batteries into the triangular battery caddy, then place it into the base of the camera (caddy will only slide in when oriented properly)
3. **START:** Turn the *Mode Selector* to the red Infrared Camera icon.
  - Press and hold the *On/Off button* for three seconds to power the camera on or off.
4. **FOCUS:** The MikroShot is a manually focused camera. Turn the *Focus Ring* either clockwise (focus near) or counter clockwise (Focus far) to obtain a sharp focus.
5. **AUTO ADJUST:** (Level and Span) Press and release the *Auto* button each time you desire a one-time automatic adjustment.
6. **MANUAL ADJUST:** (Level and Span) Pressing the one of the *Arrow Adjustment Buttons*: LT (span Low Temp), HT (span High Temp.) or CT ( level Center Temp) will highlight that value on the LCD display.
  - Once highlighted, use the arrow buttons, left or right, to select the individual value to change.
  - Press the up and down arrow to change that individual value.

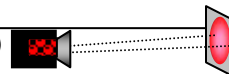
NOTE: While any portion of the span or level values are highlighted, the *Auto Button* will not function. You must press the center OK button to be able to use the Auto function.

## QuickStart: Mikron MikroShot, NEC Thermo Shot F30 Series

7. **PAUSE IMAGE:** Press and release the Freeze/Record button one time to freeze the current image in either the Infrared or Visual Camera (with temperature) mode. The letters FRZ will appear on the LCD while viewing a frozen image. Press and release again to return to live mode.
  - NOTE: while the image is froze, moving the Mode Selector to Infrared, Visual or Visual with temp will allow you to review type of image.
8. **SAVE IMAGE:** Press and hold the *Freeze/Record* button (until you see a message at the bottom of the LCD screen) to save an image in either the Infrared or Visual Camera (with temperature) mode. Once saved the camera returns to a live image.
  - NOTE: we highly recommend that you freeze the image before saving it; this allows you to verify its proper focus and perspective. If you freeze before saving, after saving you will be returned to the frozen image and will need to press and release the Freeze Button to return to a live image.
9. **RECALL IMAGE:** Turn the *Mode Selector* to the thumbnail preview position to view previously saved image thumbnails.
  - Select the desired thumbnail using the arrow keys to move between images (the last image saved will be highlighted in the lower right corner).
  - Once selected press OK to review, press OK again to readjust image values.
  - To return to a live image return the *Mode Selector* to the Infrared Camera position.
10. **PALETTE:** While viewing a live or frozen image press the *Menu Button*, then using the *Arrow Buttons* highlight the Scale menu box. Press OK.
  - Highlight the Color Palette menu then press OK.
  - Highlight the desired palette then press OK.
11. **RANGE:** The MikroShot is a single range camera.
12. **Emissivity:** Press the down arrow (FN, function) this will show the four function boxes on the LCD. Select the Emissivity icon (green circle with the E=) and press OK.
  - Use the four *Arrow Buttons* to select and turn emissivity on and then change it's value.
  - Press OK when done to return to a live image.



IFOV =3.1 mRad (Theoretical with 160x120 Detector and standard 28°x21° lens)



Detect 1in. target @ 26.8