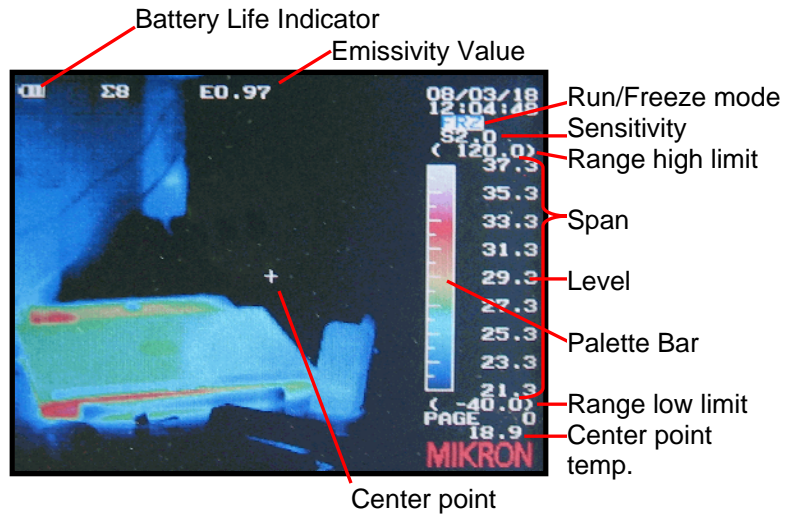


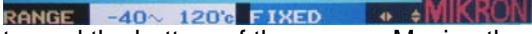
QuickStart: Mikron 7800 Series



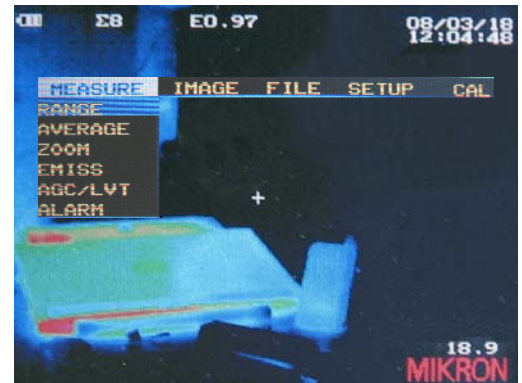
Important LCD Indicators

- MEMORY:** The Mikron 7800 houses internal memory for image storage.
- POWER:** Insert a fully charged battery (charger included) into the battery bay in the base of the camera's pistol grip.
 - You can also power the camera with the included power adapter by plugging it into the *Auxiliary Power* connector.
- START:** Unlatch the rear cover/LCD screen and pivot all the way up to the viewing position. Push and hold the *Power* button until the screen flashes, indicating that the camera has initiated its start-up sequence which takes about 20 seconds to complete. The default start-up screen (shown above) will now be showing in the LCD.
 - To turn your camera off at any time push and hold the *Power* button until the LCD goes blank.
- FOCUS:** The Mikron 7800 has a motorized focus operated by pushing one of the two *Focus* buttons.
- AUTO ADJUST:** To let the camera automatically determine the level and span settings simply press *Joystick* straight in and hold for 1 or 2 seconds. The "Auto Processing" message will momentarily flash along the bottom of the image. (Note: if you do not hold it long enough it will perform a different menu function.)
- MANUAL ADJUST:** Manual adjustment of level and span is also achieved with the *Joystick*.
 - To increase the span move the *Joystick* to the right; to decrease span move the *Joystick* to the left.
 - The "S" number or *Sensitivity indicator* denotes the number of degrees between each of the numerical divisions of the *Span indicator* scale.
 - To raise the level move the *Joystick* up and to lower the level move the *Joystick* down.
- PAUSE IMAGE:** Pause or Freeze the image by momentarily pressing the front *Trigger*. Give it a few seconds to pause the image. (If this is not an image you desire to save, abort the save by pressing the *Trigger* button again and return to a live image.)
- SAVE IMAGE:** To save an image first pause the image as above then press and release the *Save* button and as before, give it a few seconds to accomplish this task.

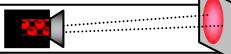
QuickStart: Mikron 7800 Series

9. **PALETTE:** To change palettes between gray scale and the default color palette, very quickly push the *Joystick* straight in and release it. This will bring up several menu items around the outside edge of the LCD, these which will only appear for approximately 5-10 seconds if no action is taken. Now each time you momentarily push the *Joystick* straight in a different item will be highlighted. When the *Palette bar* is highlighted with a thick white outline move the *Joystick* up or down to toggle between palettes. When the desired palette is showing in the highlighted *Palette bar* push in on the *Joystick* to select your choice or simply wait for the screen to time out, returning you to the default screen.
10. **RANGE:** While the camera is running, if it is necessary to change to a more appropriate range push the *Menu* button which will bring a series of dropdown menu lists in the center of the LCD. Using the *Joystick* to maneuver through these drop down menus (left/right/up/down), highlight the “Range” box under the “Measure” dropdown menu.
 - Push the *Joystick* straight in to select the blue highlighted “Range” menu choice.
 - The drop downs will turn off and the new screen will display the current range setting highlighted in white

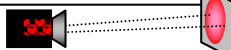
toward the bottom of the screen. Moving the *Joystick* up or down will change to the highlighted range next higher or lower. Pushing the *Joystick* in will select the highlighted range and return you to the default screen.
11. **EMISSIVITY:** Verify that you are in the “RUN” mode (the trigger toggles between RUN and FRZ mode)
 - Press the *Joystick* button access the quick menu mode (objects around perimeter of LCD)
 - Press and release the *Joystick* button until the Emissivity value is highlighted.
 - Move the *Joystick* up/down to change the value then press the *Joystick* button to set the new value.
12. **BACKGROUND:** Verify that you are in the “RUN” mode (the trigger toggles between RUN and FRZ mode).
 - Press the *Menu* button.
 - Use the *Joystick* to highlight the “CAL” dropdown menu then down to highlight “Background”.
 - Press the *Joystick* to show and highlight the current value at the bottom of the LCD
 - Move the *Joystick* up/down to change the value.
 - Press the *Joystick* to save the new value and return to the main display.



7800, 7815, 1715B

IFOV =1.2 mRad (Theoretical with 320x240 Detector and standard 21°x16° lens)  Detect 1in. target @ 69ft.

7816

IFOV =2.0 mRad (Theoretical with 160x120 Detector and standard 18.4°x14° lens)  Detect 1in. target @ 41ft.