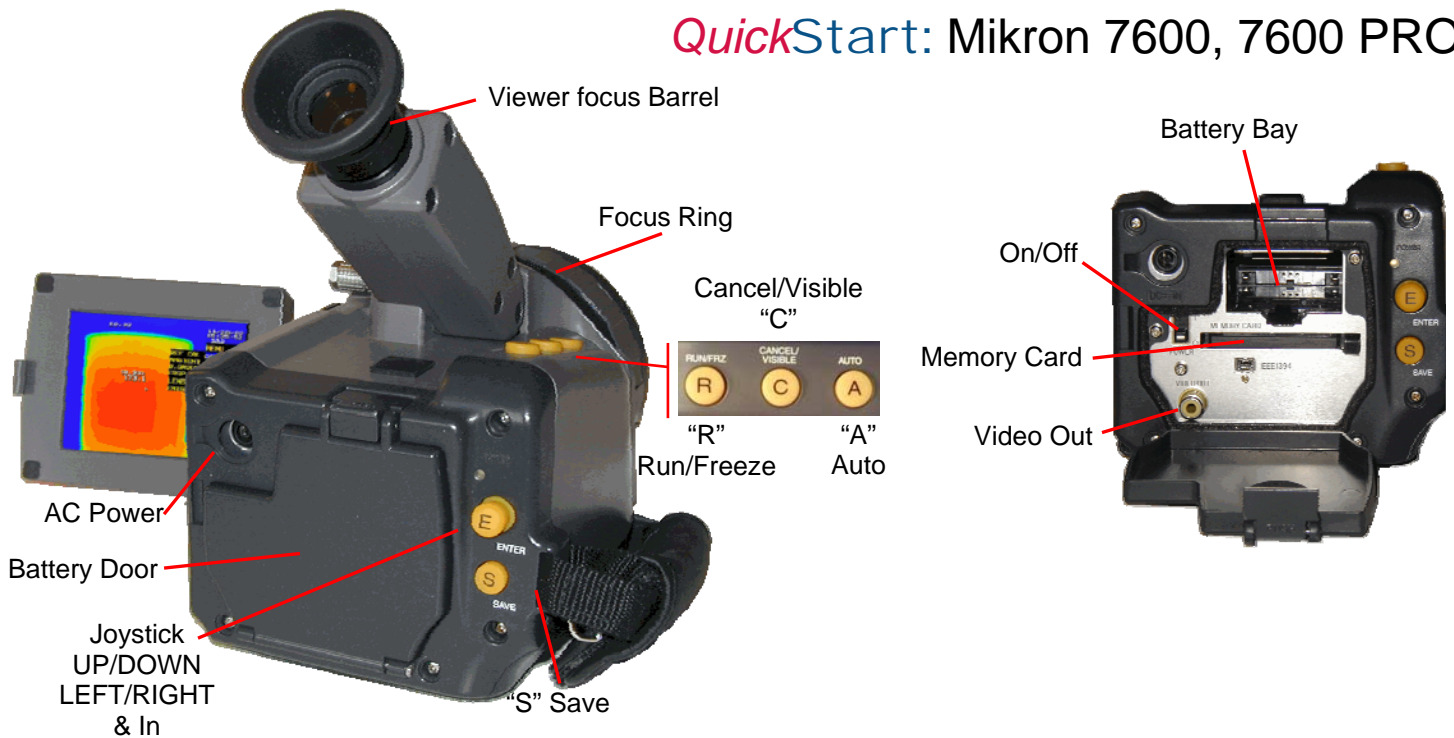


## QuickStart: Mikron 7600, 7600 PRO



1. **MEMORY:** Open the Battery Door and Install a memory card into the memory card slot located below the battery compartment.
2. **POWER:** Slide a fully charged battery into the Battery Bay until it locks into position. The camera can also be powered by the included AC adapter.
3. **START:** Slide the Power Switch, next to the memory card slot, up to the on position, View the image by one of the following methods.
  1. Raise the eye piece to a comfortable viewing position and adjusting its focus by rotating the barrel just below the rubber eyecup. Get a good focus of the viewing screen by rotating the barrel until the menu text is clear and sharp.
  2. Fold out the LCD screen on the side of the camera.
4. **FOCUS:** A clear focus can be accomplished by one of two methods or a combination of the two
  1. Auto focus: Press the "A" Auto Button, this auto adjusts the focus as well as level and span.
  2. Rotate the manual Focusing Ring either clockwise or counterclockwise.
5. **AUTO ADJUST (Level and Span):** Pressing the "A" Auto Button will auto adjust focus as well as level and span.
6. **MANUAL ADJUST (Level and Span):** Use the Joystick.
  - Moving the Joystick LEFT/RIGHT will decrease or increase the span.
  - Moving the Joystick UP/DOWN will raise and lower the level.
7. **PAUSE IMAGE (Freeze):** Press the "R" Freeze/Run Button, pressing the "R" again will return you the live image mode.
8. **SAVE IMAGE:** Press the "S" (Save) Button below the Joystick; this will save both a thermal and visual image.
  - We recommend that you always pause the image as above, making sure the image is framed correctly and that a sharp focus was sustained, before saving the image.

## QuickStart: Mikron 7600, 7600 PRO

**IMPORTANT NOTE:** Some models of this camera have two variations of the menu selection system; the Standard Type (the Default Fig.1) and the Classic Type (Fig.2). Fig.1 shows the difference. You enter both menus the same way and then use the Joystick UP/DOWN and LEFT/RIGHT to move through the menu and submenu items. To select between these two systems enter the current menu system then navigate to SET UP then to INITIAL then to OPERATION. In the Standard Menu you use the Joystick "IN" to move to a sub-directory. In the Classic Menu you use the Joystick "LEFT" to open a sub-directory. In this QuickStart ST=Standard Type and CT=Classic Type

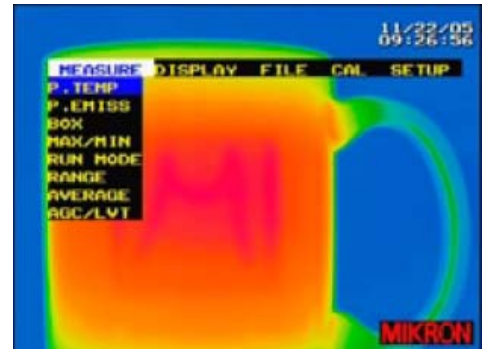


Fig 1. Standard Type Menu (Default)

9. **RECALL IMAGE:** (using classic type navigation) The camera must first be placed in the freeze mode by pressing the "R" Run/Freeze Button.
  - Then enter the menu system by pressing IN on the joystick followed by toggling the joystick LEFT/ RIGHT until the word MENU appears highlighted above the temperature scale.
    - Toggle the Joystick UP/ DOWN or LEFT/Right to Highlight REPLAY
    - Toggle left (CT) or press IN (ST) to enter the submenu
    - UP/Down to highlight "SIT File" then press IN on the Joystick to open the stored images.
    - Use the Joystick UP/DOWN/LEFT/RIGHT to highlight the desired image.
    - Press IN to on the Joystick to view the selected image.
      - Press the "C" button to toggle between the IR image and the associated visual image.
      - Press the "R" Button to return to Live Image mode.

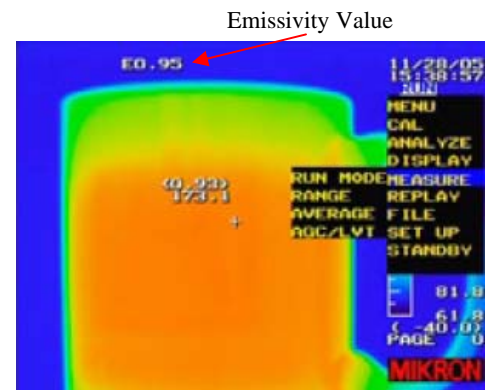


Fig 2. Classic Type Menu

10. **PALETTE:** Press IN on the Joystick, The Palette Bar should now be highlighted.
  - Toggling UP/DOWN on the joystick will toggle between the preselected color and grayscale palettes.
  - To select a different color palette, go into the menu system as above and select DISPLAY, then COLOR. Select the color palette of your choice, highlighted. at the bottom of the display.

11. **RANGE:** Press IN on the Joystick.

- Use the joystick to select menu items; select MEASURE then RANGE then IN on the Joystick to select.



Fig 3.

- The current range should now be highlighted at the bottom of the screen. (Fig 3.)
- Toggle the Joystick UP/DOWN to select the desired range.
- Press IN on the Joystick to save the setting and return to a live image

12. **EMISSIVITY:** Press IN on the Joystick.

- Toggle LEFT/RIGHT until the current Emissivity value is highlighted at the top of the viewing screen.
  - Toggle the Joystick UP/DOWN to either increase or decrease the value.
  - Press IN on the Joystick to save the setting and return to a live image.

13. **BACKGROUND:** Press IN on the Joystick.

- Use the joystick to select menu items; CAL then RANGE then IN on the Joystick to select.
  - The current Background value should now be highlighted at the bottom of the screen.
  - Toggle the Joystick UP/DOWN to select the desired Value.
  - Press IN on the Joystick to save the setting and return to a live image.

IFOV =1.2 mRad (Theoretical with 320x240 Detector and standard 21°x16° lens)



Detect 1in. target @ 69ft.