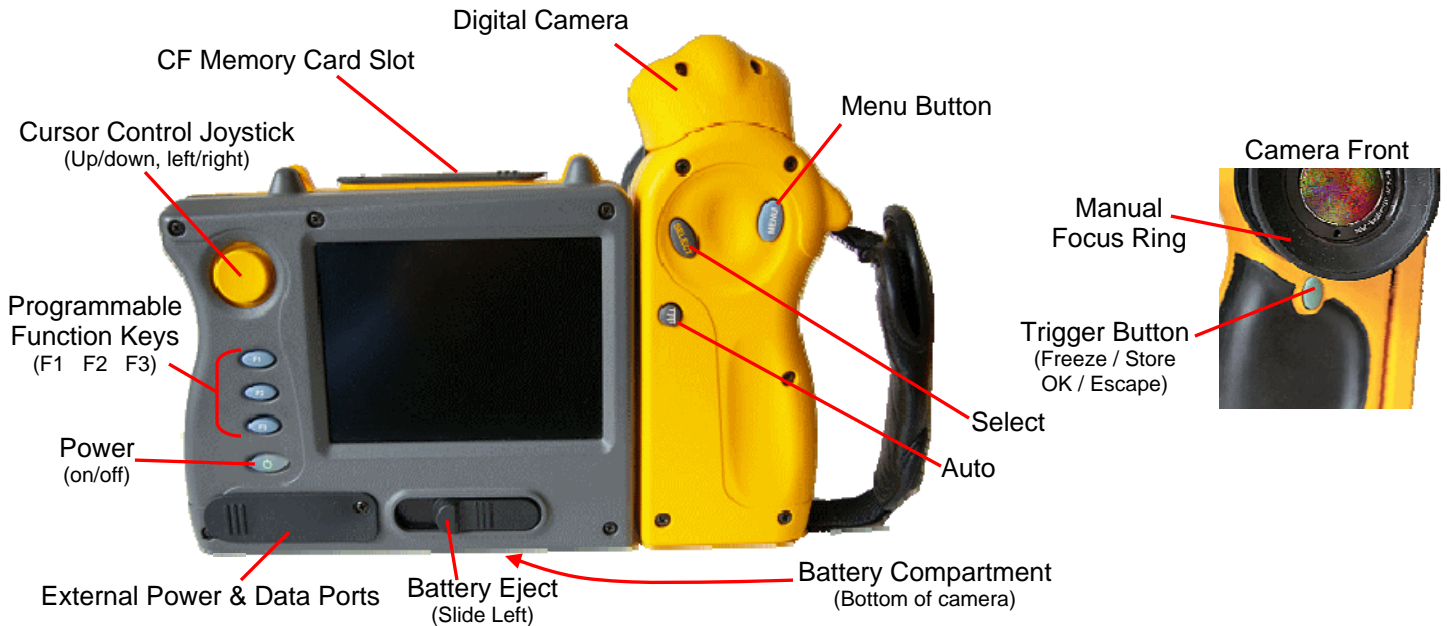


## QuickStart: FLUKE Ti40, Ti45, Ti50, Ti55, TiR2, TiR3, TiR4



- MEMORY:** Insert the Compact Flash memory card into the slot under the black rubber cover on the top of the camera. To remove the memory card push down on the small eject key next to the card slot.
- POWER:** Install a fully charged battery by pushing it into the *Battery Compartment* until it locks into position. To remove the battery push the *Battery Eject* slider to the left and the battery will pop out.
  - The camera can also be powered with the included AC power adapter.
- START:** To turn the camera on push the *Power* button and a start up sequence will begin lasting approximately 20 seconds. You should then see a live infrared image in the LCD.
  - To turn the camera off push and hold the *Power* button for approximately 3 seconds.
  - While the camera is powered up the camera can also be put into a hibernation mode to save battery life by tapping the *Power* button momentarily. When in the hibernation mode the *Power* button will blink every two seconds. To return to full power, once again give the *Power* button a tap.
- FOCUS:** Focus is achieved by rotating the *Manual Focus Ring* on the front of the lens.
- AUTO ADJUST:** To let the camera automatically determine the level and span settings, press the and release *Auto* button.
- MANUAL ADJUST:** To manually adjust span and level use the *Cursor Control Joystick* to place the arrow cursor on the temperature indicator you wish to adjust on the right side of the LCD (Fig1). This can be either the upper span temperature limit, the lower limit or the level temperature in the middle, now push the *Select* button. You will notice that when the number to be adjusted is selected highlighted with a box around the number (Fig 2). You now move the *Joystick* up or down to increase or decrease it's value,
  - If you prefer (on all models except the Ti40) to adjust the values of the upper and lower span limits at the same time, allowing one to increase as the other decreases

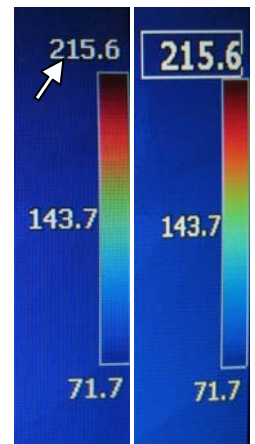


Fig 1

Fig 2

## QuickStart: FLUKE Ti40, Ti45, Ti50, Ti55, TiR2, TiR3, TiR4

move the Joystick left or right while the center level value is highlighted.

7. **PAUSE IMAGE:** To pause the image, tap the *Trigger* Button, the image will indicate this in the upper left corner of the LCD. Tapping the *Trigger* Button again to return to a live image.
8. **SAVE IMAGE:** To save an image it is recommended that you first pause the image as above. Once sure that the pause image is the one you wish to save, press and hold the *Trigger* Button for about 1-2 seconds. This initiates the save process, the saved file name will now be visible in the upper left corner of the LCD as the image remains paused. Tapping the *Trigger* Button again to return to a live image.

9. **RECALL:** To recall a saved image push the *Menu* button this will display the main menu on the LCD. Use the Joystick to move the arrow cursor to highlight "Browse Images" (Fig 3). Tap the *Select* button and you will be taken to your saved images, nine to a page. Use the cursor and *Select* button to move through the pages and to select the saved image you wish to view. Once selected double tap the *Select* button. The selected image will show full view in the LCD.
  - Tap the *Trigger* Button to return to a live image

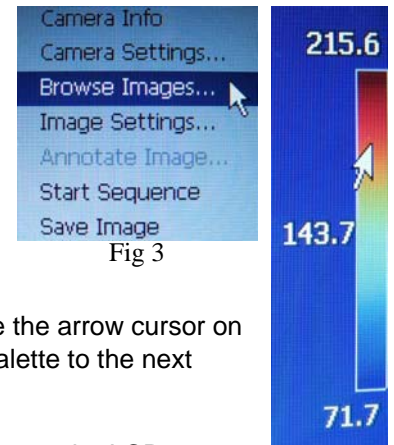


Fig 3

10. **PALETTE:** Change color palettes by using the *Cursor Control Joystick* to move the arrow cursor on top of the palette indicator bar (Fig 4). Tapping the *Select* button will change the palette to the next choice. Scroll through all choices by repeatedly tapping the *Select* button.

11. **RANGE:** To change range push the *Menu* button which will show the main menu on the LCD.

- Use the Joystick to move the arrow cursor to highlight "Camera Settings" (Fig 5) and tap the *Select* button.
- Position the pointer over the "Lens" folder tab and tap the *Select* button.
- Position the pointer over the desired range radio button and tap *Select*.
- Tap the *Trigger* Button to accept the changes and return to a live image.

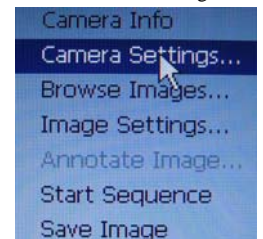


Fig 4

12. **EMISSIVITY:** To change the emissivity value (Fig 6), highlight the current value by using the *Cursor Control Joystick* to move the arrow cursor on top of the emissivity value then tap *Select*.

- Move the *Cursor Control Joystick* up and down to change to the desired value.
- When finished, tap the *Select* button again to deselect.

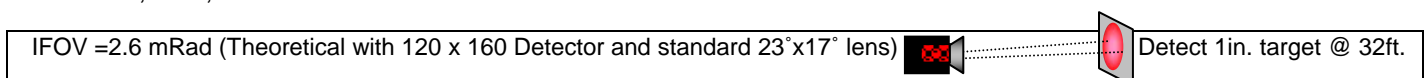


Fig 5

13. **BACKGROUND:** To change the Background Temperature value (Fig 6), highlight the current value by using the *Cursor Control Joystick* to move the arrow cursor on top of the background value then tap *Select*.

- Move the *Cursor Control Joystick* up and down to change to the desired value.
- When finished, tap the *Select* button again to deselect.

Fluke Ti 40, Ti45, TiR2



Fluke Ti50, Ti55, TiR3, TiR4

