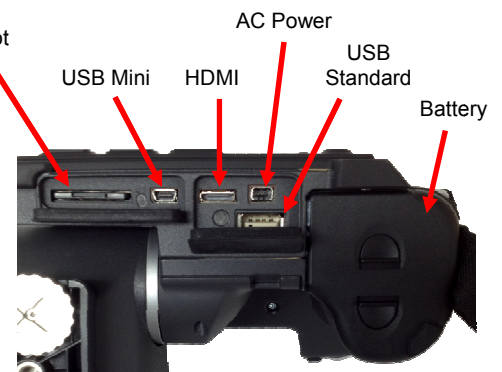
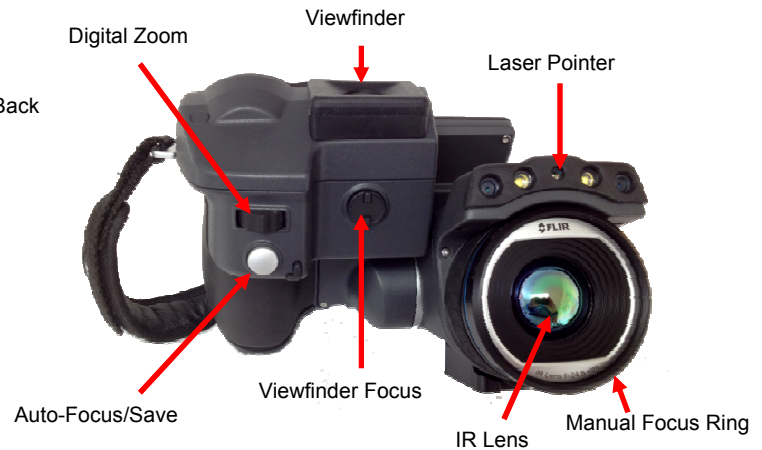


QuickStart: FLIR T 640/620



1. CHECK MEMORY CARD:

- While holding the camera as if you are operating it, open the left-hand rubber memory/data port cover located just beneath the LCD screen (example at right).
- Insert the SD memory card into the proper slot or verify that it is installed.

2. INSERT BATTERY:

- Insert a fully charged battery in to the bottom of the unit (example of installed battery at right) and push until it clicks/locks in to place. To remove the battery, pinch the two small sliders on the battery itself to eject.

3. START-UP:

- To start the camera, press and release the POWER button on the back of the unit. The LED adjacent to the button will glow blue as it turns on.
- To turn the camera off, push and hold the On/Off button for about two seconds then release.

4. VERIFY RANGE:

- Push the MENU/BACK button to open the main menu. Using the JOYSTICK, navigate to, and highlight, the MODE icon at the bottom (example, right). Press the JOYSTICK in to open the MODE sub-menu. From here navigate to SETTINGS and press the JOYSTICK once more. This will open the SETTINGS sub-menu. Use the JOYSTICK to highlight "Temperature range" from the CAMERA tab and press the JOYSTICK to open the range sub-menu. For the purposes of the camera functionality check, use Range 1, -40°F to 302°F (-40°C to 150°C). Pressing the JOYSTICK will lock in the range you have selected. The MENU/BACK button will return you to live imaging mode.



5. SET EMISSIVITY and REFLECTED TEMPERATURE:

- Push the MENU/BACK button to open the main menu and highlight the first icon, PARAMETERS, from the top of the list. Press the JOYSTICK in to open the PARAMETERS sub-menu where you will find options to change both your emissivity setting and reflected temperature values.
- Navigate to both using the JOYSTICK and pushing in to select. You can then adjust the values of each parameter accordingly using the JOYSTICK to navigate through the values listed and pushing it in to lock your selection.

QuickStart: FLIR T 640/620

6. FOCUS:

- The primary way to focus the imager is by using the auto focus feature. While looking at your target, slightly press (about halfway) the gray AUTO FOCUS / SAVE button on the front of the imager. This will engage the camera's auto focus motor. The auto focus works best when looking at objects with good thermal contrast (distinct differences between warm and cool thermal patterns) and well defined edges.
- To fine tune your focus, you can also manually adjust it by turning the focus ring which surrounds the lens until the desired focus is reached.

7. AUTO ADJUST:

- The imager should start-up in automatic adjustment mode. Once running, simply point the camera at your target and the span and level will automatically adjust based on the hottest and coldest objects detected in the field of view.

8. MANUAL ADJUST:

- To switch to manual adjustment mode, press the A/M button located at the bottom of the LCD screen to scroll through four possible adjustment modes (Auto, Manual, Manual Min, Manual Max).
- "Manual" gives you the ability to adjust both Span and Level at the same time using the JOYSTICK. To adjust Span, move the joystick left to decrease the width of the Span and right to increase it. Pushing the joystick up or down changes Level.
- The other two modes, Manual Min or Manual Max, move either end of the Span independently.

9. SAVE IMAGE:

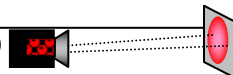
- Fully press the gray SAVE/AUTO FOCUS button on the front of the imager.

10. RECALL IMAGE:

- Push the PLAY button located at the bottom of the LCD screen. This will call up a thumbnail view of all saved images. Use the JOYSTICK to navigate and highlight the image you wish to recall. Then push the JOYSTICK button in to open the highlighted image. Pressing the MENU/BACK button once will return you to browsing images in the thumbnail view. Press it again to return to live imaging mode.

- 11. PALETTE:** Push the MENU/BACK button and select the 2nd icon, PALETTE, from the main menu. Push the JOYSTICK in to open the PALETTE sub-menu. Here you can choose from six color palettes using the JOYSTICK to navigate and select.

IFOV = .65 mRad (Theoretical with 640x480 Detector and standard 24°x18° lens)



Detect 1in. target @ 128ft.