

## QuickStart: Flir T/B Series T/B200-400



1. **MEMORY:**
  - Insert an SD memory card the slot under the rubber cover on top of the camera.
2. **POWER:**
  - Insert a charged battery into the battery bay on the bottom of the camera.
3. **START:**
  - Press the *Power* button, below and to the right of the LCD viewing screen. Press and hold to turn off.
4. **FOCUS:**
  - Slide the *Focus* Button (AF) on front of the hand grip either to the left or right to manually focus the image or push straight in and release to auto focus.
5. **AUTO ADJUST:**
  - Pressing the *Auto/Manual* button will toggle between Auto mode and Manual mode. The letter “A” or “M” will appear in the upper right portion of the image viewing screen.
6. **MANUAL ADJUST:**
  - Press the *Auto/Manual* button until the “M” appears in the image viewing screen.
    - Move the *Joystick* up to I raise the level and down to lower the level.
    - Move the *Joystick* to the left to increase the span and to the right to decrease the span.
    - As level and span is adjusted an indicator will appear to the left of the Palette bar to indicate the direction of adjustment.

## QuickStart: Flir T/B Series T/B200-400

### 7. SAVE/ IMAGE:

- Push the save button briefly to save an image.

### 8. PREVIEW IMAGE:

- Push and hold the save button for more than one second to preview an image.



Fig. 1

### 9. RECALL IMAGE:

- Press the *Recall* button (Fig.1)
  - Move the *Joystick* left or right to view individual images.
  - Move the *Joystick* up to view thumbnails.
  - Use the *Joystick* to highlight and press in to select images to view.



Fig. 2

### 10. PALETTE:

- Push the *Setup* button.
  - Using the *Joystick* scroll down to highlight Palette then press in to select.
  - Now move the *Joystick* up or down to highlight the desired palette, press in to select.

### 11. RANGE:

- Push the *Setup* button.
  - Using the *Joystick* scroll down to highlight Range then press in to select.
  - Now move the *Joystick* up or down to highlight the desired range, press in to select.



Fig. 3

### 12. EMISSIVITY and REFLECTIVE TEMP.

- Push the *Measure* button (Fig.3).
  - Move the joystick down to scroll down to highlight Parameters, then press in to select (Fig.4).
  - Use the joystick to highlight, select and change either emissivity or reflection (thermal reflection)

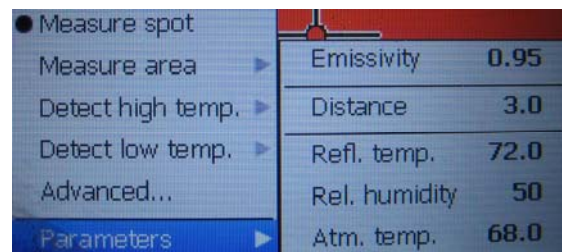
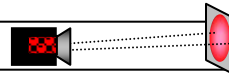


Fig. 4

#### T-360/T-400

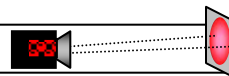
IFOV =1.4 mRad (Theoretical with 320x240 Detector and standard 25° lens)



Detect 1in. target @ 60ft.

#### T-200/T-250

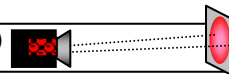
IFOV =2.8 mRad (Theoretical with 200x150 Detector and standard 25° lens)



Detect 1in. target @ 30ft.

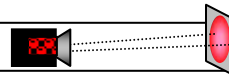
#### B-360/B-400

IFOV =1.36 mRad (Theoretical with 320x240 Detector and standard 25° lens)



Detect 1in. target @ 61ft.

IFOV =2.1 mRad (Theoretical with 200x150 Detector and standard 25° lens)



Detect 1in. target @ 40ft.

#### B-200/B250