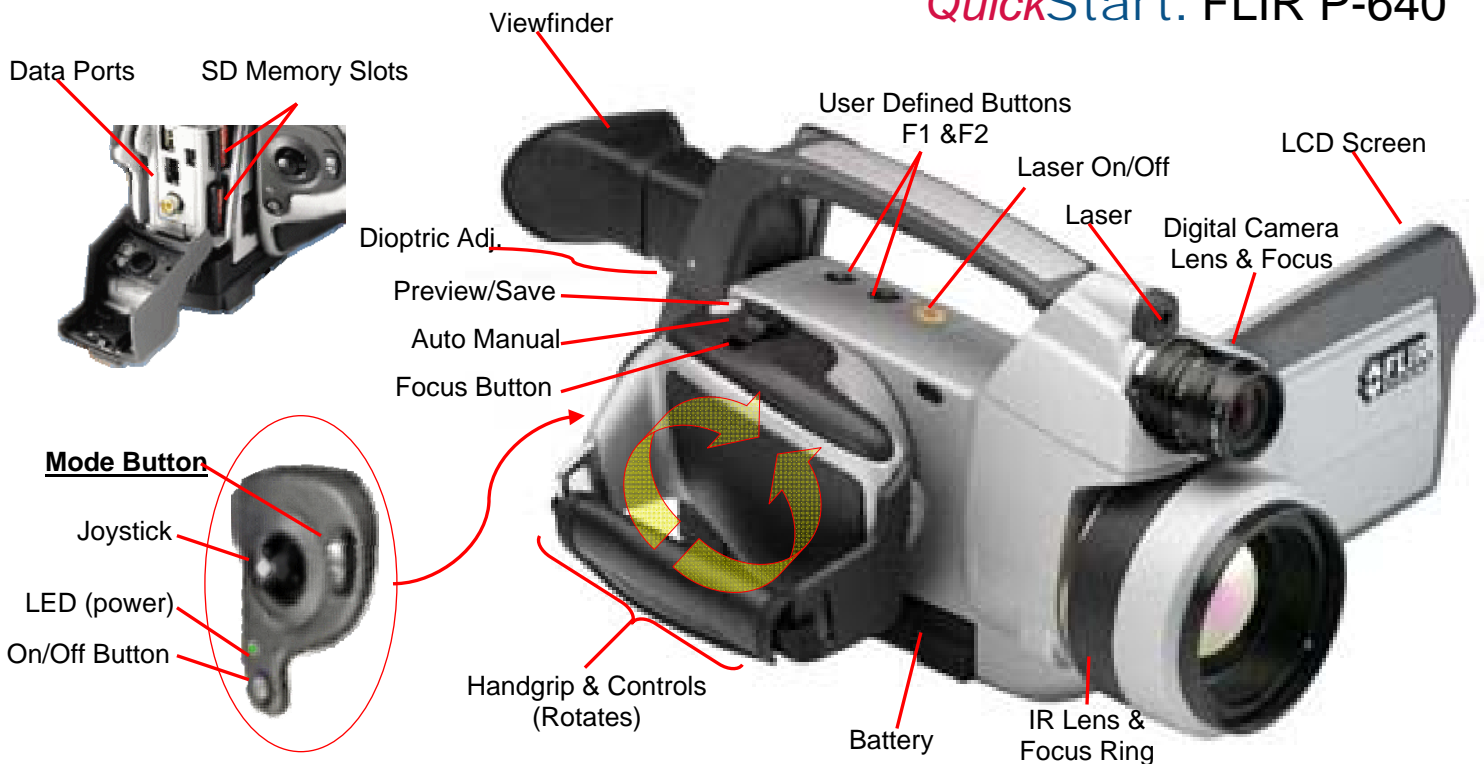


QuickStart: FLIR P-640



1. **MEMORY:** Open the rear Memory/Data Port cover and insert a SD memory card into the upper slot marked "1" and reclose.
2. **POWER:** Insert a fully charged battery by aligning the battery with the battery slots under the camera body and sliding it forward until it locks into position.
 - To remove the battery you must first fully rotate the Handgrip counter clockwise to reveal the battery release button.
3. **START:** To start the camera push and release the On/Off button on the back of the handgrip, the LED will glow green.
 - To turn the camera off, push and hold the On/Off button for more than two seconds then release.
4. **FOCUS:** You can focus the camera by three methods, Autofocus, Electric or Manual.
 - To Auto adjust push and release the center of the Focus Button. If this method does not give you a perfect focus use one of the following methods to further adjust.
 - Electric (motor driven) focus is achieved by push the Focus Button to the left or right.
 - Manually adjust focus by turning the IR Focus Ring on the camera lens either clockwise or counterclockwise.
5. **AUTO ADJUST:** To allow the camera to adjust the temperature scale's Level and Span, first push the Mode Button to show the mode selector menu. Make sure the "Camera" mode icon is selected (Fig. 1). Push in on the joystick to return to a live image.
 - Push the Auto/Manual button so that "Auto" appears in the upper right corner of the viewing screen. The camera will now continuously auto correct the Level and Span settings.
6. **MANUAL ADJUST:** (Preferred Mode) As above, make sure that the camera is in "Camera" mode.
 - Push the Auto/Manual button so that "Manual" appears in the upper right corner of the viewing screen.
 - The temperature scale Span can now be manually increased or decreased by pushing the Joystick left or right.
 - The temperature scale Level can now be manually raised or lowered by pushing the Joystick up or down.
 - A one time auto adjust can be performed (while still remaining in manual mode) by momentarily pressing in on the joystick.



Fig. 1

QuickStart: FLIR P-640

7. **PAUSE (PREVIEW) IMAGE:** Momentarily press and release the Preview/Save button. Push and release again to return to a live image.
8. **SAVE IMAGE:** To save an image, from either a live or preview image, press and hold (at least one second) the Preview/Save button.
 - Note that it is a good practice to preview (pause) an image before saving that image to verify that the image focused and framed properly.
9. **RECALL IMAGE:** Push the Mode Button to show the mode selector menu. Use the joystick to highlight the "Archive" mode icon (Fig. 2). Push in on the joystick to select and view the last image saved. Move the joystick left and right to view different saved images.
 - To View multiple saved images at one time push the Focus Button while in the Archive mode.
 - Use the joystick up/down, left/right to highlight the desired image then push in on the joystick to view that image in full screen.
10. **PALETTE:** Push the Mode Button to show the mode selector menu. Use the joystick to highlight the "Camera" mode icon (Fig. 1) and then push in on the joystick to select. In the Toolbox (Fig.4) select Palette and push the Joystick.
 - Move the joystick up/down to select a palette. Move the joystick left/right to invert the current palette.
 - To confirm and leave the dialog box push the Mode Button.
11. **RANGE:** Push the Mode Button to show the mode selector menu. Use the joystick to highlight the "Camera" mode icon (Fig. 1) and then push in on the joystick to select. In the Toolbox (Fig.3) select Temperature Range and push the Joystick.
 - Pushing the Joystick one more time will highlight the current Temperature Range
 - To select a different temperature range, use the joystick (up/down).
 - To confirm and leave the dialog box push the Mode Button.
12. **EMISSIVITY and BACKGROUND (Reflective Apparent Temperature):** Push the Mode Button to show the mode selector menu. Make sure the "Camera" mode icon is selected (Fig. 1). Push in on the joystick to return to a live image.
 - In the Toolbox Area (Fig.3) use the joystick to select the toolbox tab that looks like a thermometer.
 - Move down to Object Parameters and then push in on the joystick.
 - Use the joystick change either the Emissivity or Background (Reflective Apparent Temp.) values.
 - Press in on the joystick to confirm each change.



Fig. 2

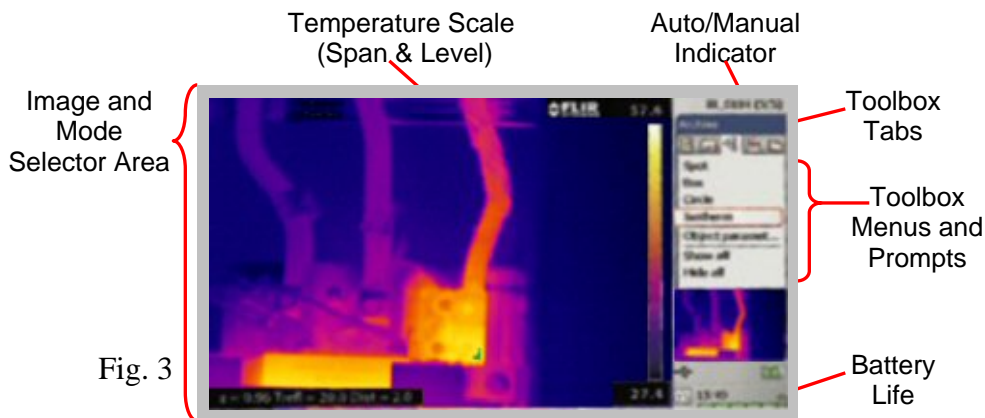
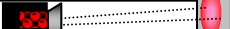


Fig. 3

IFOV = .65 mRad (Theoretical with 640x480 Detector and standard 24' x18" lens)  Detect 1in. target @ 128ft.