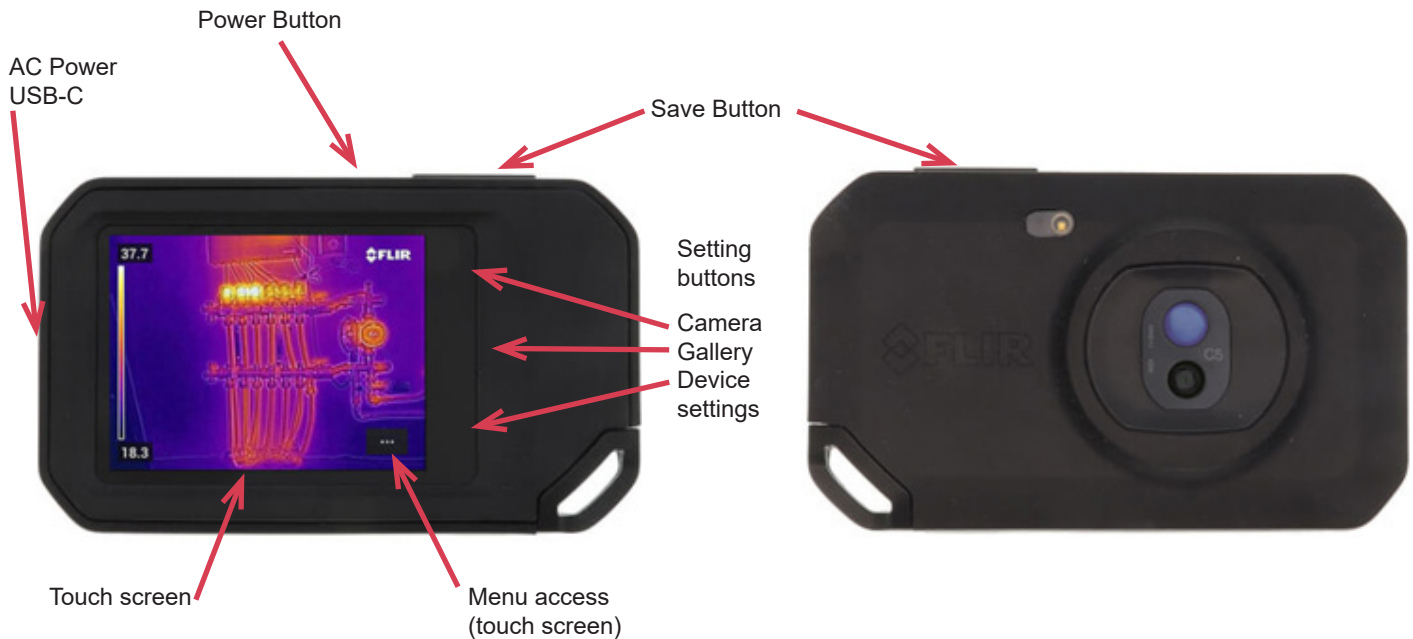


QuickStart FLIR C5



1. MEMORY:

- Memory is internal only. Can be accessed via USB-C cable for download into computer, or WI-FI / Bluetooth to Flir Ignite (cloud)
- Gallery can be accessed by the Gallery / Replay button to the right of screen.

2. POWER:

- Battery is internal and not removable. Battery is charged at the USB-C connection.

3. START:

- Turn power on/off at the power button on the top of the unit.

4. FOCUS:

- Is fixed, there is no adjustment.

5. AUTO ADJUST (Level and Span):

- This feature is turned on/off in the Menu Access (three dots lower right of screen). Icon appears as a thermometer, select by tapping Auto.

6. MANUAL ADJUST (Level & Span):

- This feature is turned on/off in the Menu Access (three dots lower right of screen). Icon appears as a thermometer, select by tapping Manual (looks like a hand).
- The span values will highlight, highlighted values will be changed by swiping up or down on the scale. Tap on value to lock or unlock. If both are highlighted, level is adjusted. If only one is highlighted, span is adjusted.

7. PAUSE IMAGE:

- Setting is not available.

8. SAVE IMAGE:

- Press button on top of unit to save image.

9. RECALL IMAGE:

- Press button to the right of screen to open gallery. Press image thumbnail to open image.
- Menu icon in upper right (three dots) will open an edit submenu.
- Image can be edited within available parameters. Manual Span / Level is active while in Edit mode. Along with Image Mode, Measurement tools, and Color palette. Back arrow (upper right) will return to previous screen.

10. PALETTE:

- On main live screen the menu access (three dots lower right) will bring up submenu color that can be accessed from there. 7 palettes are available drag finger up or down to view palettes, tap to select.

11. RANGE:

- This unit has two thermal ranges -20°C to 150°C (-4°F to 302°F) and 0°C to 400°C (32°F to 752°F)
- Press the settings button to the right of the screen. Accessing the submenu, select Camera temperature range. Select the needed range. Once selected, back arrow at the top of screen will return to previous screen. To return to live image tap the Camera Icon at the top of the right side of screen.

12. EMISSIVITY:

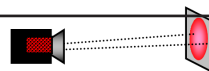
- Press the settings button to the right of the screen. Accessing the submenu, select Measurement Parameters then select, Emissivity, custom value set as needed.

13. BACKGROUND:

- Press the settings button to the right of the screen. Accessing the submenu, select Measurement Parameters, then Reflected temperature, set value as needed.

Flir C5

IFOV =5.9 mRad (Theoretical with 160 x 120 Detector and standard 54°x42° lens)



Detect 1in. target @ 14ft.